



Euclid Universal™

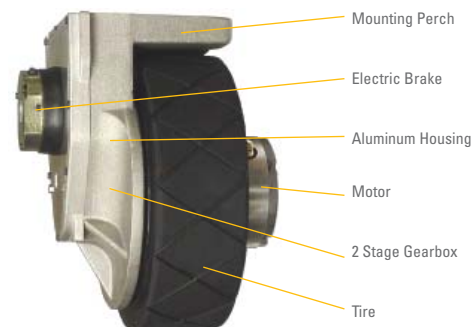
A Kinetek Company®

CHASSISDRIVE 14 wheel motor

Compact, durable traction drives for electric powered equipment

Applications

- Floor care equipment
- Material handling
- Aerial work platforms
- Automated guided vehicles
- Load movers



Features

- Field replaceable brake and motor
- High quality “EP” grease for maintenance-free operation
- Specifically designed as a self contained drive; simply bolt on and plug in
- Non-ventilated permanent magnet, series or SepEx motor
- Designed with quality seals and bearings, as well as hunter tooth gearing
- Available with or without a mechanical 6” disk brake, parking and service duty, or electric parking brake
- Main housing cast in corrosion resistant aluminum
- Designed with a 14” x 4.5” x 10.5” solid rubber X-grooved rubber tire. Options: grey non-marking, black wet traction, or polyurethane
- 34:1 or 44:1 total double reduction
- Identification tagged with serial number for easy tracking

Specifications

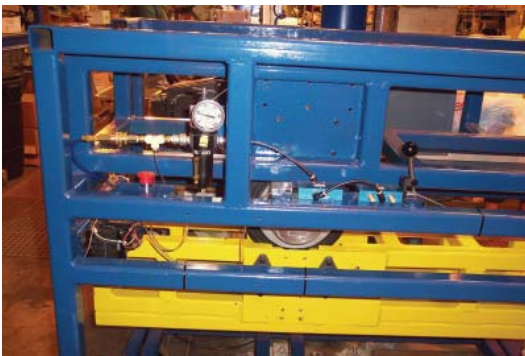
Weight:	125 lbs +/- options
Housing:	Two piece cast aluminum
Lubrication:	Extreme pressure grease
Tire:	14” H x 4.5” W x 10.5” ID, solid rubber X-grooved optional in non-marking grey or wet traction black, polyurethane
Motor:	140mm wound field (series or SepEx), 140mm AC, 4.6” PMDC <ul style="list-style-type: none"> • wound field 24, 36, 48V to 2hp continuous • AC 36V to 2hp continuous • PMDC 24, 36, 48V to 2hp continuous
Speed:	0–5 mph
Wheel load:	2000 lbs (rubber tire), 4000 lbs (polyurethane tire)
Gearbox:	34:1 or 44:1 total ratio, double reduction, helical primary, steel heat treated gears
Brake:	<ul style="list-style-type: none"> • Mechanical caliper 6” floating disk, 680 lb-ft @ wheel • Electric parking, 800 in-lb up to 3168 in-lb @ wheel
Swing radius:	6”– 9” +/- options

MADE TO ORDER, BUILT TO LAST

For the past 50 years, Euclid Universal has worked to establish its position as the global leader in the power transmission field. Working with diverse Original Equipment Manufacturers, Euclid designs and builds gear drive systems for special applications where off-the-shelf items will not fit or meet exacting rugged duty performance requirements. While the competition adapts drives originally designed for completely different purposes such as automotive windshield wipers and industrial conveyors, Euclid Universal produces gearmotors, gearheads, speed reducers and transaxles custom-made to meet the unique needs of each customer.

Our flexibility in engineering and production affords rapid response in design, prototype and production. Requirements for either low- or high-volume orders can be handled within our facility at competitive costs. We test for sound and vibration issues to assure pre-established requirements are met on each shipment.

CHASSISDRIVE 14 wheel motor



Load tester at assembly bench



Heavy duty, steel, heat treated precision machined gearing



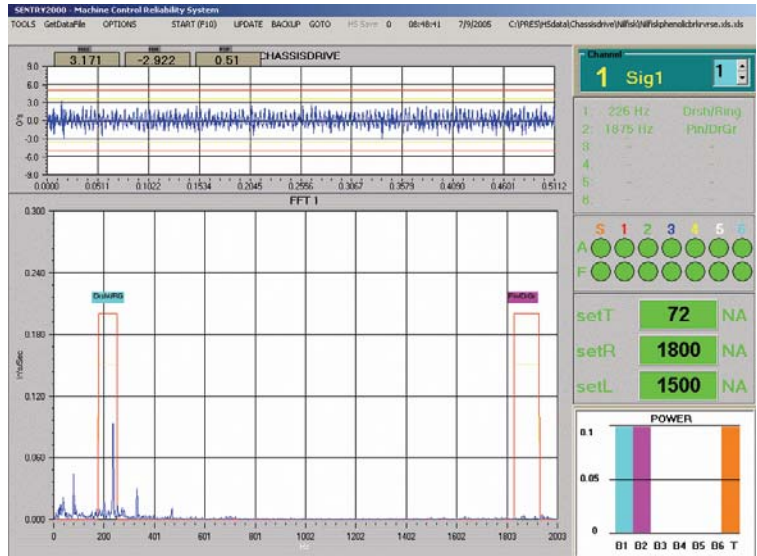
Euclid Universal™

A Kinetek Company®

Euclid Universal Corporation
30500 Bruce Industrial Parkway, Suite B
Solon, OH 44135
Phone 440-349-4083 / Fax 440-349-4894
www.kinetekinc.com

U.S. contact: Norm Zondervan
zondervann@imperialelectric.com

European contact: Massimo Piazzi
piazzim@kinetek-europe.com



Computer-based vibration testing during assembly

