



Euclid Universal

A Kinetek Company

MC200C

right angle drive

Medium duty, self-contained worm gear drive with motor, gearbox and brake

Applications

- Floor care equipment
- Mobile medical equipment
- Door openers
- Mixers
- Specialty vehicles
- 1/4-scale model locomotives
- Tugs



Features

- Low profile
- Hardened steel and bronze gearing
- Ball and tapered roller bearing construction
- Viton output seal
- Field replaceable motor
- Grease or oil lubrication for life
- Aluminum housing

Options

- Parking brake
- Output shaft configuration
- Hollow output option
- Motor terminals
- Left and right hand outputs
- Dual opposing output

Specifications

Ratio:	2.75, 7.5, 10, 12, 15, 18.5, 25, 36, 42, 48, 60:1
Motor:	4" and 4.5", .44 hp–1.5 hp TENV
Output speed:	31–1963 rpm
Voltage:	12V, 24V, 36V, 48V, DC
Lubrication:	Synthetic oil/EP grease
Output shaft:	Keyed/tapped to 7/8" max OD
Mounting:	3 bolt 3.375" BC

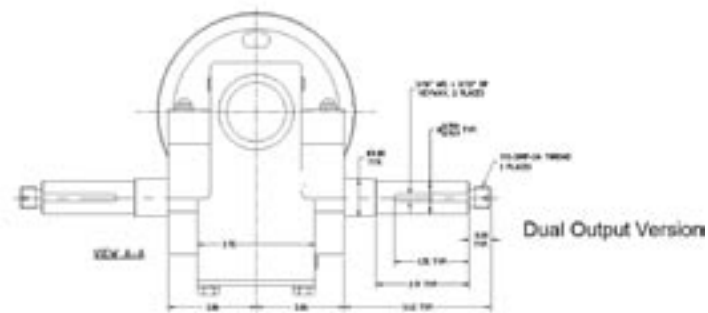
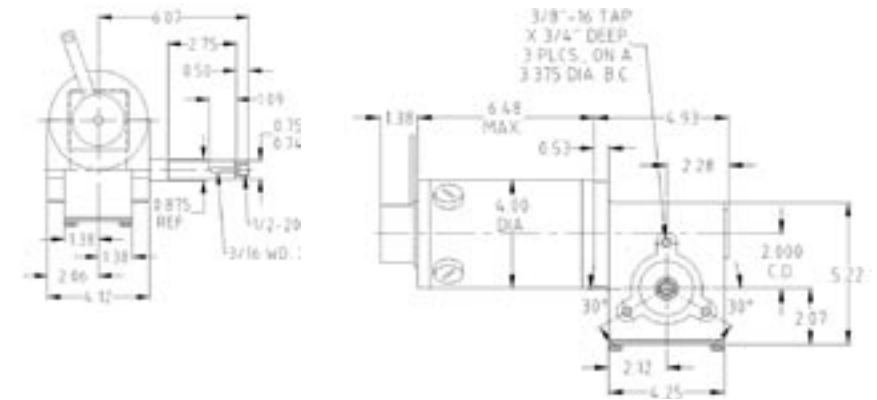
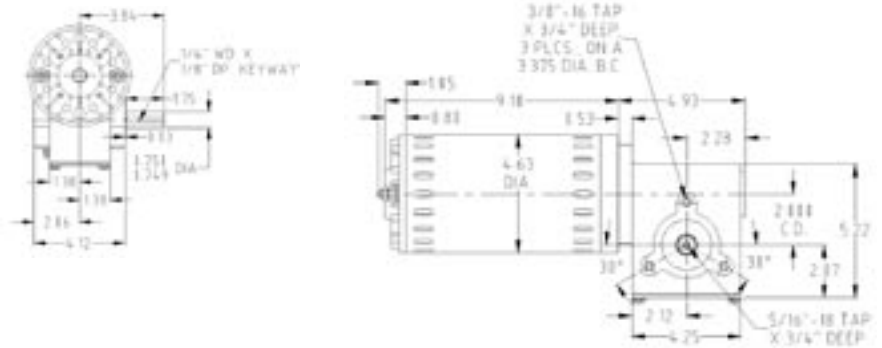
MADE TO ORDER, BUILT TO LAST

For the past 50 years, Euclid Universal has worked to establish its position as the global leader in the power transmission field. Working with diverse Original Equipment Manufacturers, Euclid designs and builds gear drive systems for special applications where off-the-shelf items will not fit or meet exacting rugged duty performance requirements. While the competition adapts drives originally designed for completely different purposes such as automotive windshield wipers and industrial conveyors, Euclid Universal produces gearmotors, gearheads, speed reducers and transaxles custom-made to meet the unique needs of each customer.

Our flexibility in engineering and production affords rapid response in design, prototype and production. Requirements for either low- or high-volume orders can be handled within our facility at competitive costs. We test for sound and vibration issues to assure pre-established requirements are met on each shipment.

MC200C

right angle drive



Euclid Universal

A Kinetek Company

Euclid Universal Corporation
 30500 Bruce Industrial Parkway, Suite B
 Solon, OH 44135
 Phone 440-349-4083 / Fax 440-349-4894
 www.kinetekinc.com

U.S. contact: Norm Zondervan
 zondervann@imperialelectric.com

European contact: Massimo Piazzi
 piazzi@kinetek-europe.com

Part No.	Ratio	Output RPM	Motor RPM	Voltage	HP	Duty	Torque	Motor Diameter	Weight	Manual Release Brake
MC200C-4129C-2.75	2.75	1818	5000	36VDC	1.7	Cont.	59 in-lbs	4 5/8"	23.6 lbs	N/A
MC200C-4129C-10	10	500	5000	36VDC	1.7	Cont.	214 in-lbs	4 5/8"	23.6 lbs	N/A
MC200C-4129C-18.5	18.5	270	5000	36VDC	1.7	Cont.	397 in-lbs	4 5/8"	23.6 lbs	N/A
MC200C-4129C-25	25	200	5000	36VDC	1.7	Cont.	535 in-lbs	4 5/8"	23.6 lbs	N/A

Part No.	Ratio	Output RPM	Motor RPM	Voltage	HP	Duty	Torque	Motor Diameter	Weight	Manual Release Brake
BMC200C-4229C-5	5	680	3400	24VDC	0.44	Cont.	41 in-lbs	4"	18.9 lbs	35 in-lbs
BMC200C-4229C-10	10	340	3400	24VDC	0.44	Cont.	81 in-lbs	4"	18.9 lbs	35 in-lbs
BMC200C-4229C-18	18	189	3400	24VDC	0.44	Cont.	146 in-lbs	4"	18.9 lbs	35 in-lbs
BMC200C-4229C-22.3	22.3	152	3400	24VDC	0.44	Cont.	181 in-lbs	4"	18.9 lbs	35 in-lbs