

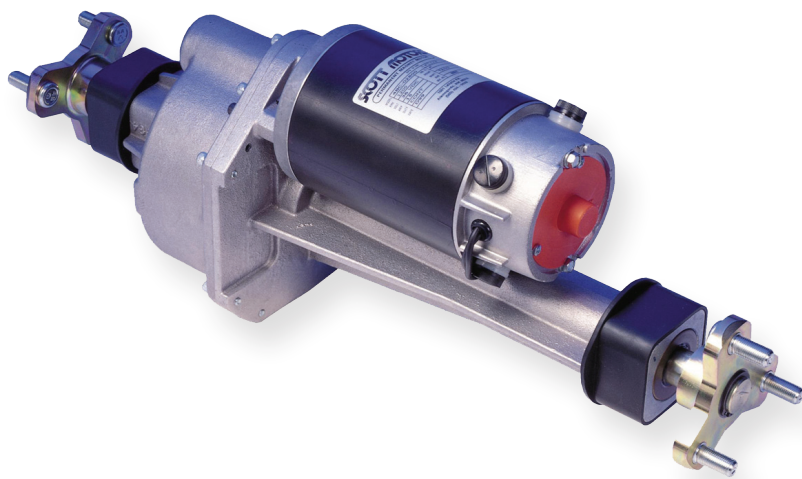


318 Transaxle traction drive

Medium duty, self-contained drive axle, including motor, gearbox, differential, brake and wheel hubs

For the past 50 years, Euclid Universal has worked to establish its position as a global leader in the power transmission field. Working with diverse Original Equipment Manufacturers, Euclid designs and builds gear drive systems for special applications where off-the-shelf items will not fit or meet exacting rugged duty performance requirements. While the competition adapts drives originally designed for completely different purposes such as automotive windshield wipers and industrial conveyors, Euclid Universal produces gearmotors, gearheads, speed reducers and transaxles custom-made to meet the unique needs of each customer.

Our flexibility in engineering and production affords rapid response in design, prototype and production. Requirements for either low- or high-volume orders can be handled within our facility at competitive costs. We test for sound and vibration issues to assure pre-established requirements are met on each shipment.



Features

- Cut steel helical gearing for smooth and efficient operation
- Motor coupling for simple field maintenance
- Full ball and needle bearing construction
- Aluminum housing for corrosion resistance
- Neoprene mounting sleeves
- Multiple output speeds available
- Several voltage options
- Parking brake option
- Oil seals on axle shafts for protection against dirt intrusion
- Available wheel mounting flanges

Specifications

- Operation: Bi-directional
- Power: 1/3–3/4 hp
- Voltage: 24V, 36V, 48VDC
- Motor: Permanent magnet, 4.63" diameter
- Load capacity: < 1600 lbs
- Insulation class: B
- Ratio: 16:1, 18.8:1
- Output speed: 64, 75, 113, 225 rpm
- Weight: 45 lbs (configuration specific)
- Lubrication: Extreme pressure grease

Options

- Parking brake
- Plating for corrosion resistance
- Custom output shafts
- Wheel mounting flanges

Applications

- Floor care equipment
- Electric vehicles
- Personnel vehicles
- Portable machines
- Load movers

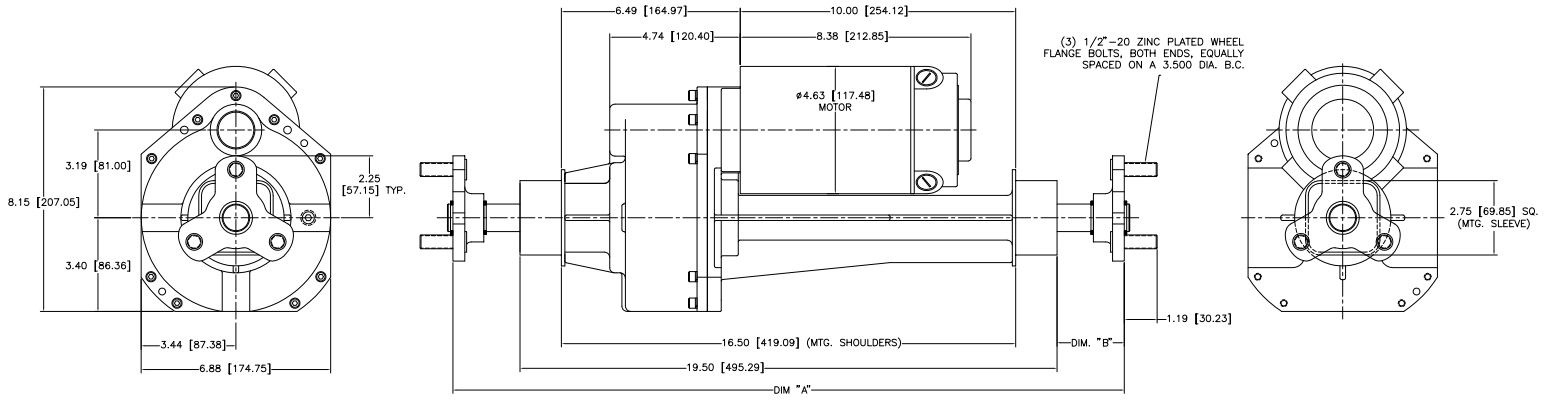


Euclid Universal®

A Kinetek Company®

Euclid Universal
 30500 Bruce Industrial Parkway, Suite B
 Solon, OH 44139
 Phone: (440) 349-4083
 Fax: (440) 349-4894
 Email: sales@imperialelectric.com
 Web: eucliduniversal.com

Dimensions



MODEL 318 TRANSAXLE

Product Specifications

Part Number	Motor HP	Motor Watts	Motor RPM	Motor Frame	Motor Enclosure	Voltage	Ratio	Output RPM	Full Load AMPS	Overhung Torque (Cont.)	Approx. Weight (lbs.)	Dimensional Ref. A Inches (mm)	Dimensional Ref. B Inches (mm)
3186503D15.5	1/2 HP	375	1200	42	TENV	36 V	15.5:1	78	15	407 (46 N-m)	45 (20.5 Kg)	24.38" (619.3mm)	2.44" (62mm)
3184721D16	1/2 HP	375	1200	42	TENV	36 V	16:1	75	15	420 (47.5 N-m)	45 (20.5 Kg)	23.06" (585.7mm)	1.78" (45.2mm)
3185366D16	1/2 HP	375	1200	42	TENV	24 V	16:1	75	20	420 (47.5 N-m)	45 (20.5 Kg)	23.06" (585.7mm)	1.78" (45.2mm)



Euclid Universal[®]

A Kinetek Company[®]

30500 Bruce Industrial Parkway, Suite B
Solon, OH 44139

Phone: (440) 349-4083
Fax: (440) 349-4894

Email: sales@imperialelectric.com
Web: eucliduniversal.com